

La Rubina



del Mare

VALERIE MEACHUM

Marion Laborre

"The Ruby of The Sea"



presented by Valerie Meachum ~ C2E2 2021

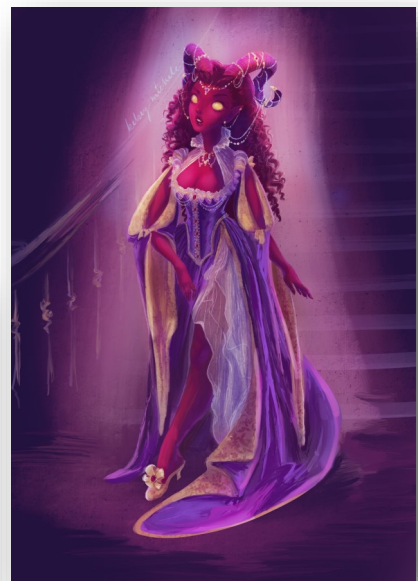
Inspiration



Above: Venice in *Dangerous Beauty* - Below: Nicodranas (fan art by Erinye)
(I see what you did there, Matt Mercer, and I approve!)



Courtesans in *Dangerous Beauty*
(costume design by Gabriella Pescucci)



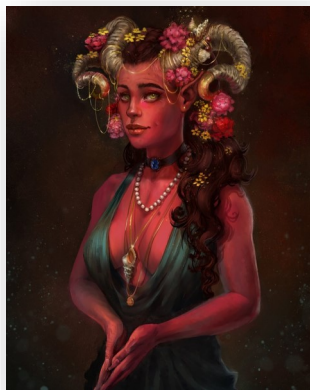
...and then I found this art
by Tough Tink!

Horns



Base plastic horns

Products: Vallejo brush-on primer, acrylic craft paints, acrylic satin varnish
Techniques: dilute wash, dry brush



Originally painted ivory
with gold wash for
makeup test inspired by
Kiri Leonard portrait

Repainted red for final
version, but kept the gold
wash idea



Neodymium magnets set into craft foam
bases on horns & headband

Secured with Barge cement



Chemise

Base pattern - redrafted for full length and trailing split sleeves



Added sleeves for practicality – washable layer between painted skin & non-washable pieces



Sleeve shape echoes Jester
Like mother, like daughter!
(official portrait by Ariana Orner)



Lace hem tape for drawstring casings

Narrow satin ribbon drawstrings



Skirt



Base skirt pattern

Redrafted to add curved train



Train



Bustled



Fastening



Balayouse



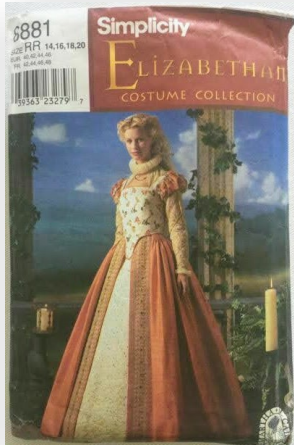
Bustle tapes



Pocket

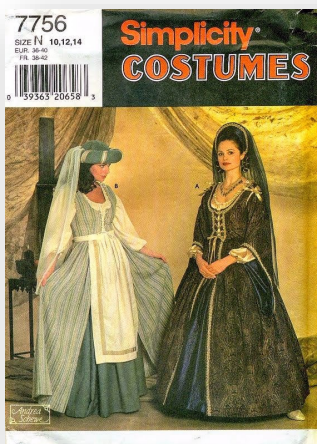


Bodice, Partlet, Oversleeves



Bodice and partlet base pattern

Bodice redrafted for straight seams and lower neckline



Bust pads

Oversleeves base pattern

Redrafted to lengthen



Shoes



Heel repair — scrap leather secured with Barge cement



Clips

Tail



“Spine” - split flex cable tubing

Skin — fleece backed tablecloth vinyl



Drawers



Jester: You don't wear underwear?

Caduceus: What's underwear?

Yasha: You wear pants under your pants?



Jewelry



Vintage faux sapphire pendant represents Jester, her "Little Sapphire"



Filigree tassel caps slightly flattened to fit horn tips, secured with E-6000